



**ALBUQUERQUE
PUBLIC SCHOOLS**

Statistical Peers for Benchmarking

2009

August 2009
River Dunavin



ALBUQUERQUE PUBLIC SCHOOLS

BOARD OF EDUCATION

MARTIN ESQUIVEL
President

PAULA MAES
Vice President

DOLORES GRIEGO
Secretary

DAVID EUGENE PEERCY
Instructional Policy Chair

LORENZO L. GARCIA
District Relations Chair

DAVID L. ROBBINS
Finance/Audit Chair

ROBERT D. LUCERO
Capital Outlay Chair

Superintendent
WINSTON BROOKS

LINDA SINK
Chief Academic Officer

BRAD WINTER
Chief Operations Officer

RUBY ETHRIDGE
Associate Superintendent

DIANE KERSCHEN
Associate Superintendent

RAQUEL REEDY
Associate Superintendent

EDUARDO SOTO
Associate Superintendent

INSTRUCTION AND ACCOUNTABILITY

Rose-Ann McKernan, Executive Director

Research, Deployment & Accountability

Thomas Genné, Director

6400 Uptown Blvd. NE (400 EAST)

Albuquerque, New Mexico 87110

(505) 872-6870

www.rda.aps.edu

Statistical Peers for Benchmarking - 2009

Albuquerque Public Schools (APS) is organized using a feeder system known as the “Cluster System.” In 2009 there were 11 clusters consisting of the elementary and middle schools that feed students to 11 regular high schools. For 2009, Vocano Vista High School was assigned to West Mesa Cluster and Atrisco Heritage Academy High School was assigned to Rio Grande. There is an additional cluster of alternative schools. Every APS cluster has a range of demographic diversity of students among its schools. The cluster system is effectively a geographic grouping of schools intended to provide administrative and other efficiencies.

When considering instructional and evaluative purposes it can be useful to identify schools that have similar student populations. The Statistical Peers for Benchmarking tool represents a data-

driven strategy to identify groups of similar schools. The tool addresses the question: “Which APS schools are most alike in terms of student characteristics?” The statistical method K-means cluster analysis was used to form the peer groups of schools based on NCLB subgroups and student mobility variables. The statistical procedure assigns schools to groups comprised of most similar members called Statistical Peers. The resulting peer groups themselves are also maximally distinct from one another. The variables were the 2008-2009 percentages of students eligible for free or reduced-price lunch (FRL), English language learners (ELL), non-Anglo cultural/ethnic identity, students eligible for Special Education (excluding Gifted Education), and student mobility. Student mobility refers to the phenomenon of students changing schools for reasons other than grade promotion. Students who transfer frequently between schools during the school year are at greater risk for academic and behavioral problems (Hartman, 2002). In simple terms, mobility is the number of students who either enrolled or withdrew divided by total school enrollment. Once groups were formed, a panel of APS education professionals familiar with the unique characteristics of APS schools confirmed the functional validity of the statistical peer groups. When using the Statistical Peers for Benchmarking tool, consider each group an intact set of schools with similar student populations.

The Statistical Peers for Benchmarking tool is designed for many uses such as comparing schools on measures of student achievement, or forming work groups during professional

development programs. A primary goal for the tool is to foster collaboration. For example, once schools are identified as exemplary on some measure, e.g., outperforming expectations on an in common assessment, then personnel from high performing schools can be seen as resources for Statistical Peer schools. This approach facilitates sharing best practices among schools facing similar challenges. While comparing schools within one Statistical Peer group is informative, there will be situations for some schools to compare themselves to schools in other peer groups. For example, Special Education programs differ between school sites, thus there may be occasions to choose to make comparisons with schools while taking into account type of Special Education programs offered.

There are three sections in this report. First, the Statistical Peers for Benchmarking tool presents APS schools in 14 groups of statistical peers, eight elementary, four middle, two high schools plus alternative schools. Graphs in the second section display achieved percent proficient and a predicted achievement range for each school in math and reading on the New Mexico Standards Based Assessments.

- The report has 3 sections:
- Statistical Peers grouping tool
 - Graphic displays of 2009 SBA results
 - Source data for this report

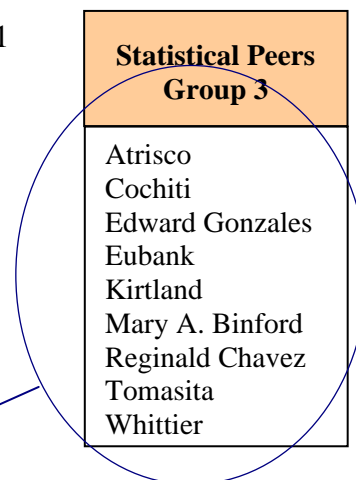
Predicted achievement ranges are 95% confidence intervals from OLS multiple regression. The graphs show only one moment in time (status), growth from year to year is not considered here. In other words, while a school may appear to have performed well or poorly, remarkable loss or gain in performance may be evident when a series of its achievement measures are examined. Predicted achievement ranges provide another way to consider NMSBA results thus adding information to annual NCLB reports. The third section contains source data used in this report.

Using Statistical Peers for Benchmarking

Consider each Statistical Peers group a distinct set of comparison schools. There probably will be situations for schools to compare themselves to schools in other peer groups. Statistical Peers are listed alphabetically within each group, not by any relative similarity to one another.

Consider each group a distinct set of comparison schools

Figure 1



2009

Statistical Peers for Benchmarking

2009

Statistical Peer Group 1	Statistical Peer Group 3	Statistical Peer Group 5	Statistical Peer Group 7	Statistical Peer Group 9	Statistical Peer Group 11	Statistical Peer Group 13
East San Jose Emerson La Mesa Mountain View Wherry	Atrisco Cochiti Edward Gonzales Eubank Kirtland Mary A. Binford Reginald Chavez Tomasita Whittier	Bel-Air Hodgin MacArthur Mark Twain McCollum Mission Avenue	A. Montoya Arroyo Del Oso Bandelier Chamiza Corrales John Baker Marie Hughes Monte Vista Oñate Osuna Petroglyph Sandia Base Seven Bar Sierra Vista Sunset View Tierra Antigua Ventana Ranch	Ernie Pyle Harrison Hayes Polk Truman Van Buren Washington	Cleveland Grant Jackson James Monroe Jefferson LB Johnson Taylor	Albuquerque Atrisco Heritage Del Norte Highland Rio Grande Valley West Mesa
Statistical Peer Group 2	Statistical Peer Group 4	Statistical Peer Group 6	Statistical Peer Group 8	Statistical Peer Group 10	Statistical Peer Group 12	Statistical Peer Group 14
Adobe Acres Alamosa Armijo Barcelona Dolores Gonzales Duranes Eugene Field Hawthorne Kit Carson La Luz Lavaland Los Padillas Lowell Navajo Valle Vista	Alameda Carlos Rey Lew Wallace Longfellow Los Ranchos Montezuma Painted Sky Pajarito S. R. Marmon	Acoma Alvarado Apache Bellehaven Chaparral Chelwood Collet Park Comanche Edmund G. Ross Governor Bent Griegos Inez Manzano Mesa Matheson Park Mitchell Sombra del Monte Zia Zuni	Dennis Chavez Double Eagle Georgia O Keefe Hubert Humphrey North Star S. Y. Jackson San Antonito	Garfield Jimmy Carter John Adams Kennedy McKinley Taft Wilson	Desert Ridge Eisenhower Hoover Madison Roosevelt	Cibola Eldorado La Cueva Manzano Sandia Volcano Vista
Alternative Schools						
Career Enrichment Ctr. 9-12			New Futures 7-12			
Early College Academy 9-10			School on Wheels 9-12			
Evening High 9-12			Sierra Alternative 9-12			
Family School K-8			Vision Quest 6-8			
Freedom High 10-12						



These Statistical Peer Groups are comprised of schools with most similar proportions of students in the five NCLB subgroups and student mobility during school year 2008-09.



Comparison of Achieved Percent Proficient and Predicted Achievement Range

The horizontal bars reflect schools' achieved percent proficient and advanced students present there the full academic year (Figure 2). Hairlines (95% confidence interval) show the predicted percent proficient range from the statistical method OLS regression. The results are based on each school's student population demographics and 2009 NMSBA performance. The graphs with the predicted achievement ranges provide another way to consider NMSBA results. Figure 3 displays an example annual measurable objective (AMO) target for meeting AYP. Note that it is possible to exceed AMO and fail to achieve the predicted performance range. No overlap of the confidence intervals indicates statistically significant different performances between schools within Statistical Peer Groups. Schools C and E show lack of overlap with D, thus C & E performances are statistically different from that of school D.

Figure 2

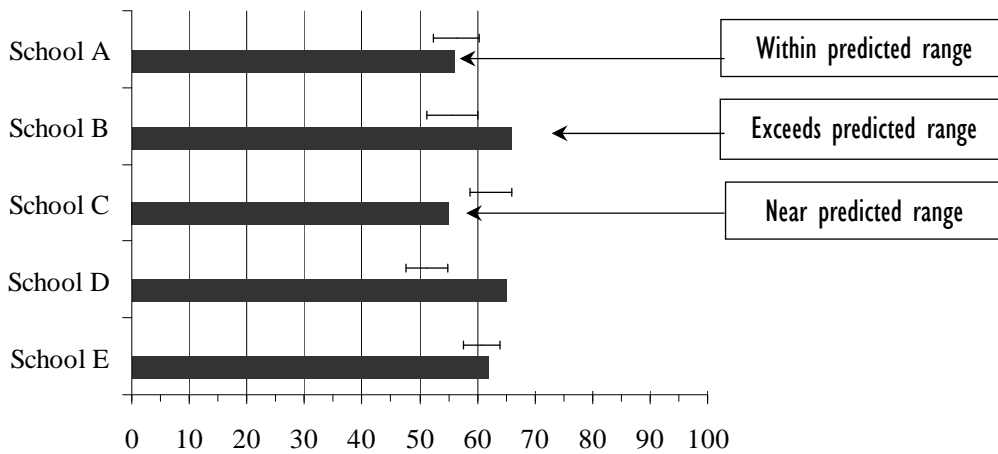
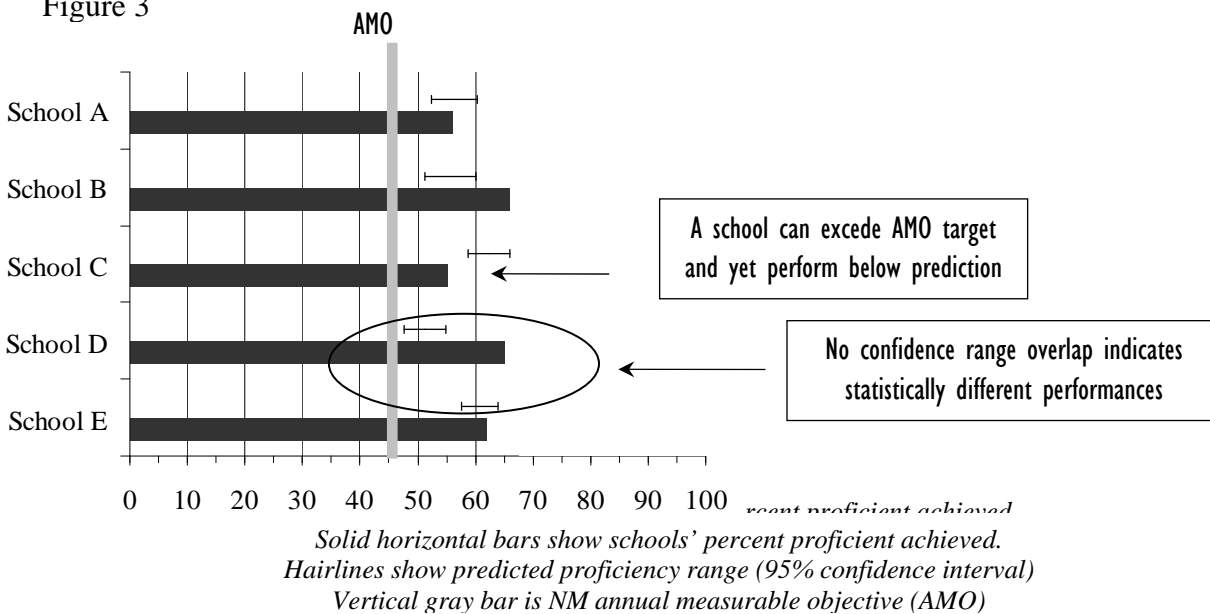


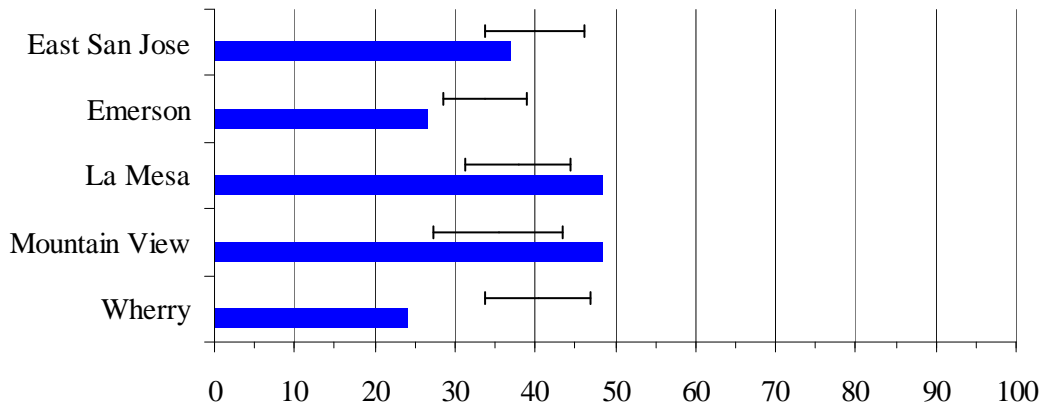
Figure 3



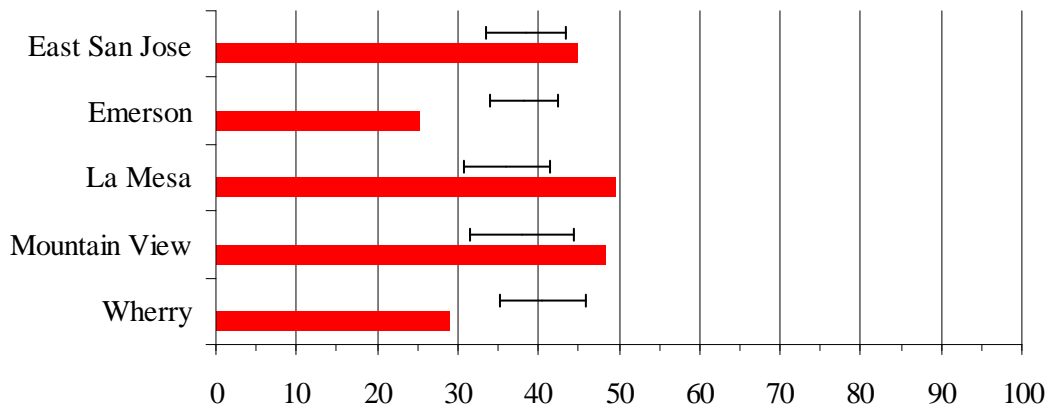
Comparison of Achieved Percent Proficient with Predicted Achievement Range

Statistical Peers Group 1 NM Standards Based Assessment 2009

Math Percent Proficient 2009



Reading Percent Proficient 2009

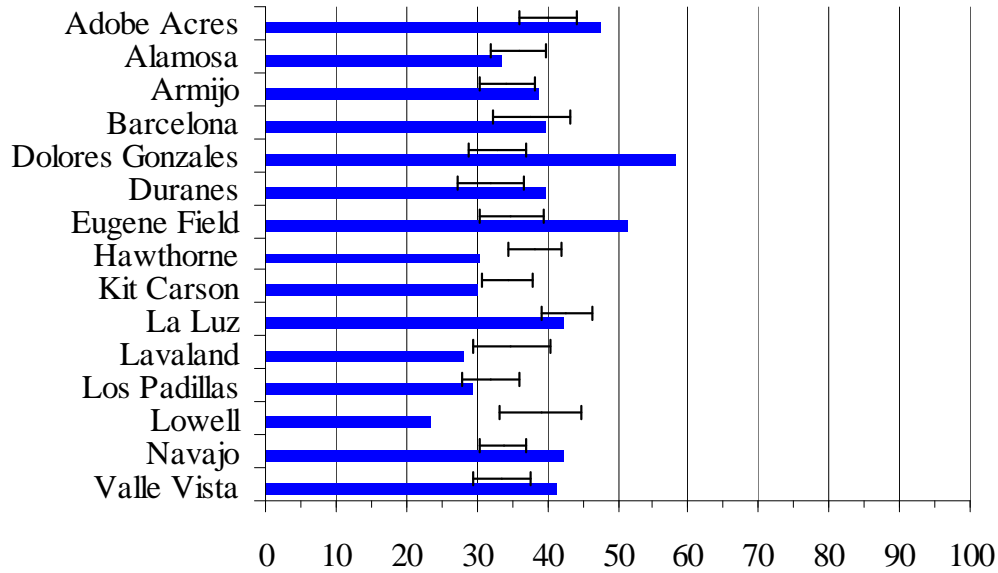


*Solid horizontal bars show schools' percent proficient achieved.
Hairlines show predicted proficiency range (95% confidence interval)*

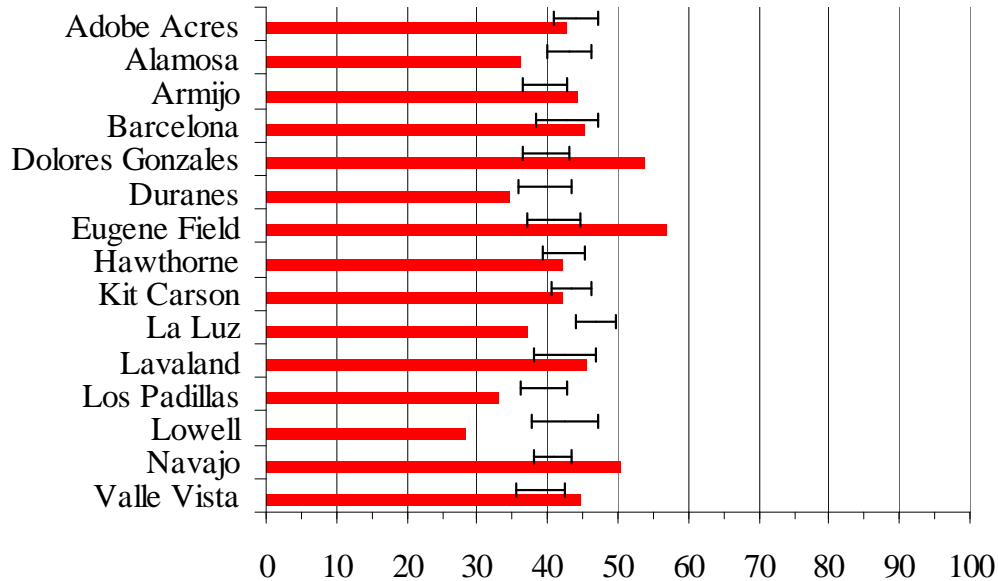
Comparison of Achieved Percent Proficient with Predicted Achievement Range

Statistical Peers Group 2 NM Standards Based Assessment 2009

Math Percent Proficient 2009



Reading Percent Proficient 2009

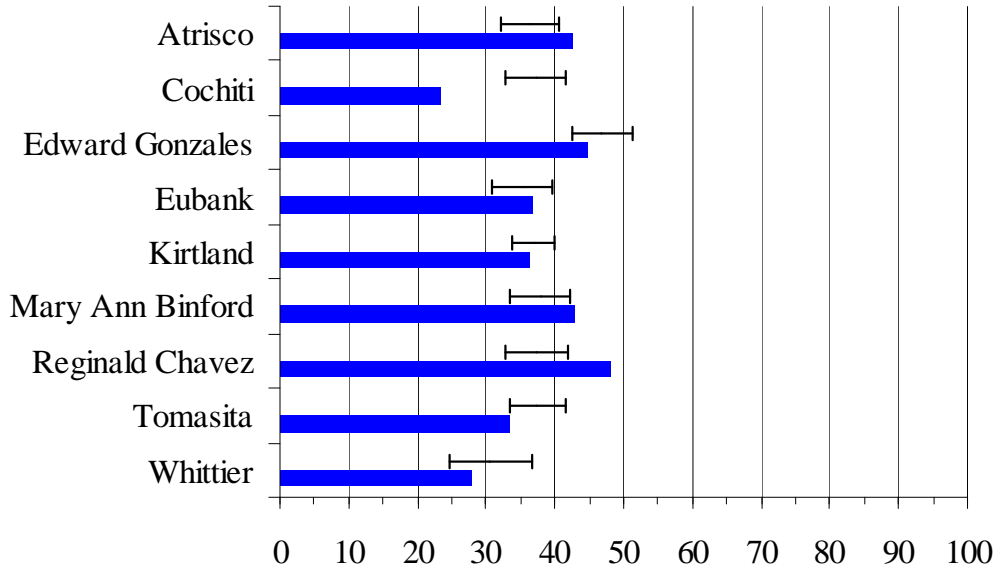


*Solid horizontal bars show schools' percent proficient achieved.
Hairlines show predicted proficiency range (95% confidence interval)*

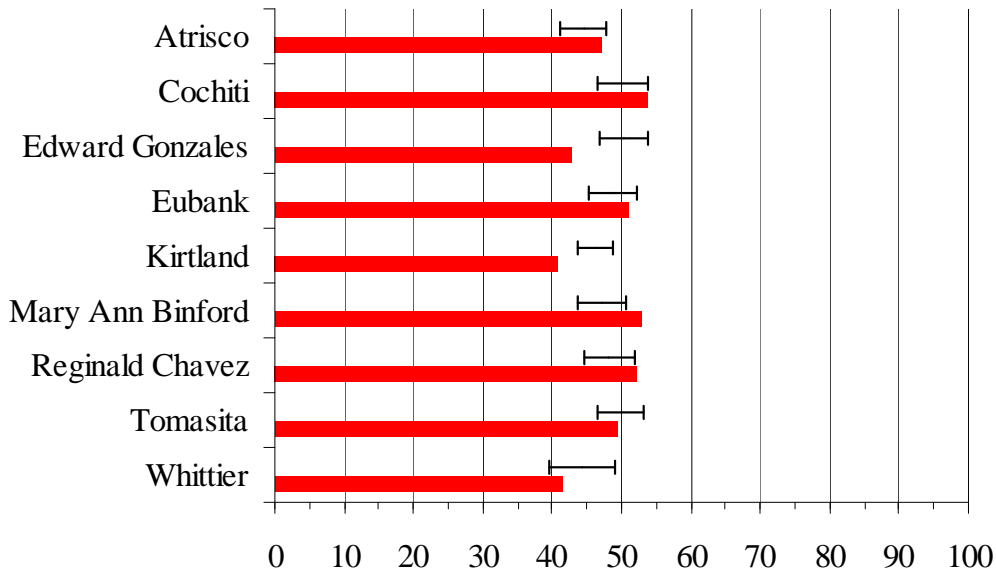
Comparison of Achieved Percent Proficient with Predicted Achievement Range

Statistical Peers Group 3 NM Standards Based Assessment 2009

Math Percent Proficient 2009



Reading Percent Proficient 2009

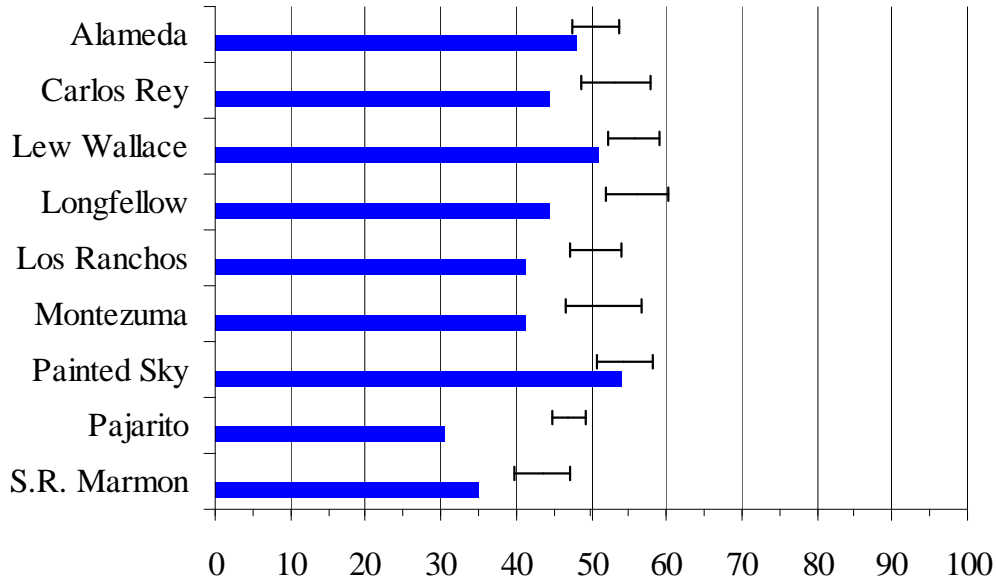


*Solid horizontal bars show schools' percent proficient achieved.
Hairlines show predicted proficiency range (95% confidence interval)*

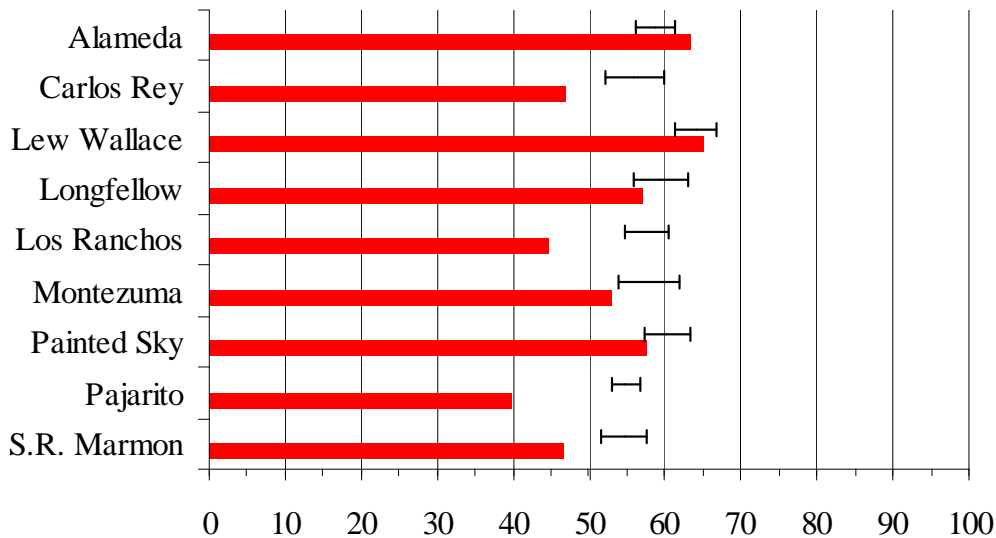
Comparison of Achieved Percent Proficient with Predicted Achievement Range

Statistical Peers Group 4 NM Standards Based Assessment 2009

Math Percent Proficient 2009



Reading Percent Proficient 2009

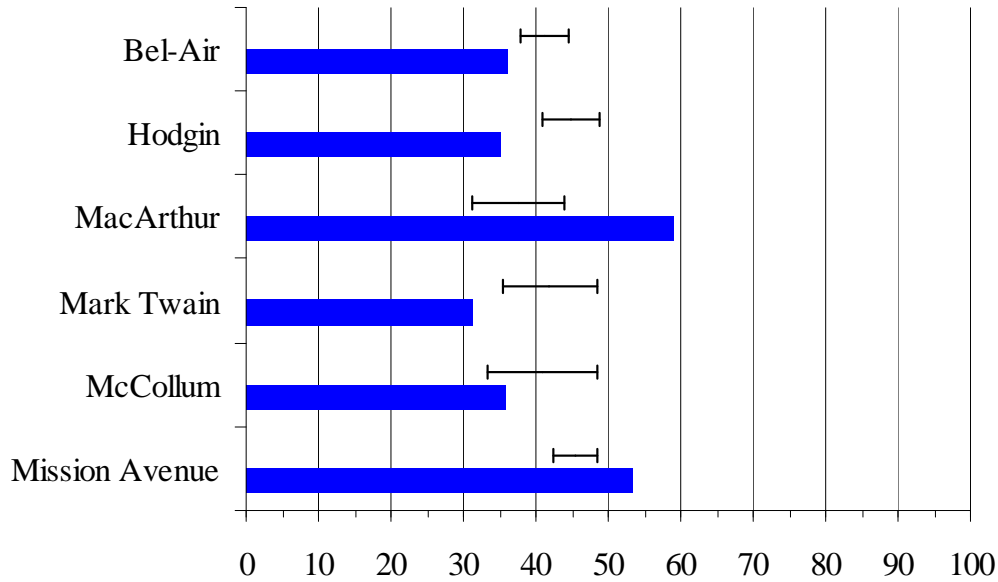


*Solid horizontal bars show schools' percent proficient achieved.
Hairlines show predicted proficiency range (95% confidence interval)*

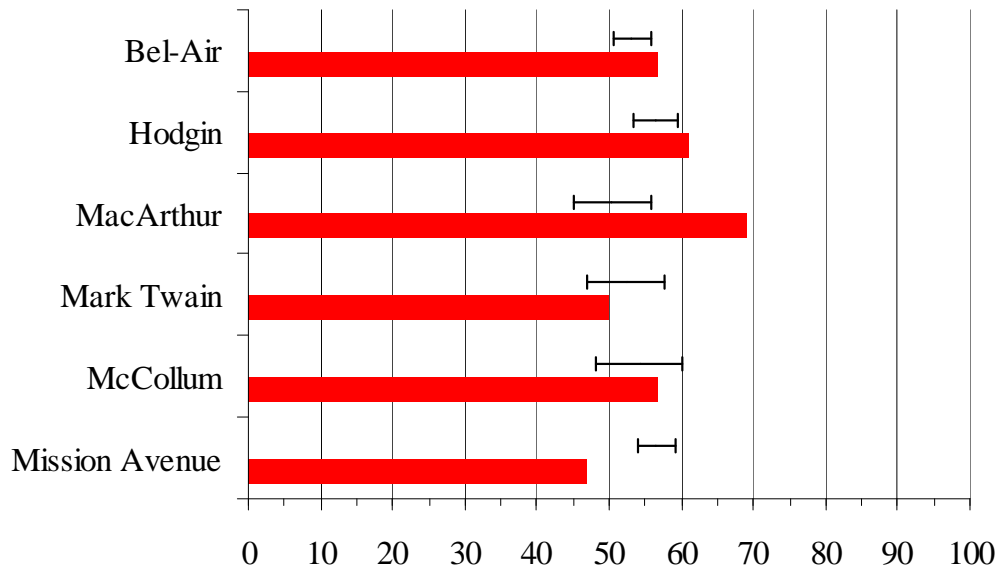
Comparison of Achieved Percent Proficient with Predicted Achievement Range

Statistical Peers Group 5 NM Standards Based Assessment 2009

Math Percent Proficient 2009



Reading Percent Proficient 2009

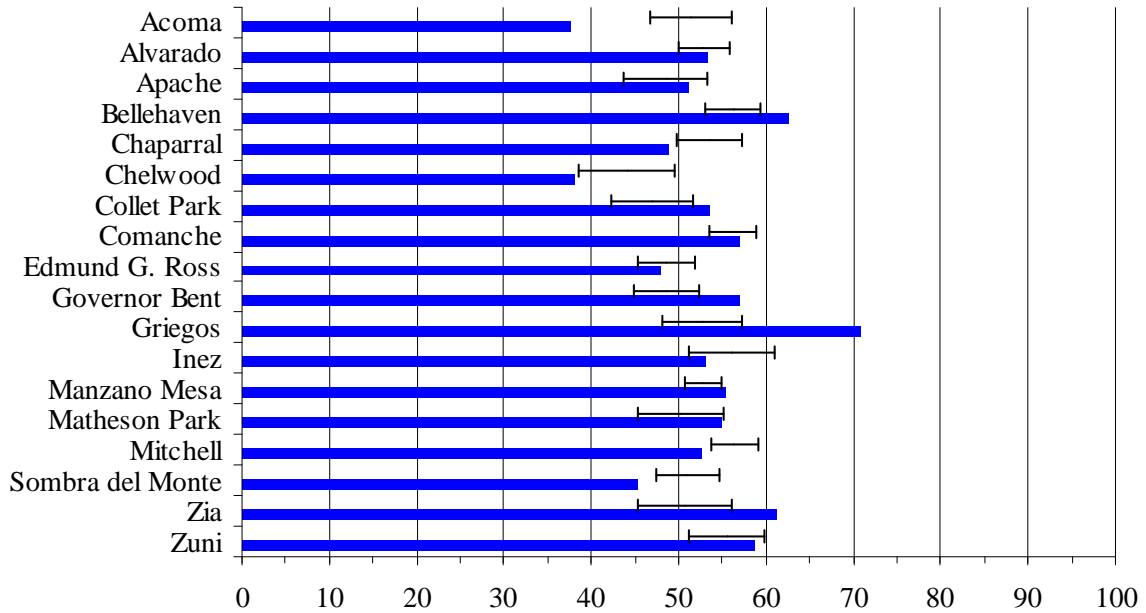


*Solid horizontal bars show schools' percent proficient achieved.
Hairlines show predicted proficiency range (95% confidence interval)*

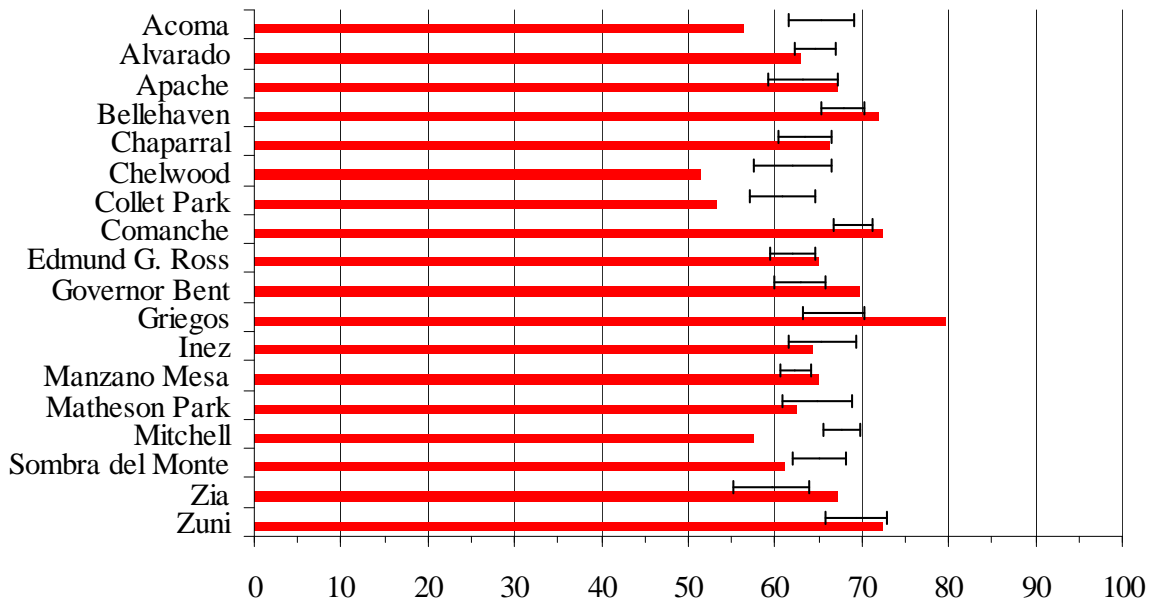
Comparison of Achieved Percent Proficient with Predicted Achievement Range

Statistical Peers Group 6 NM Standards Based Assessment 2009

Math Percent Proficient 2009



Reading Percent Proficient 2008

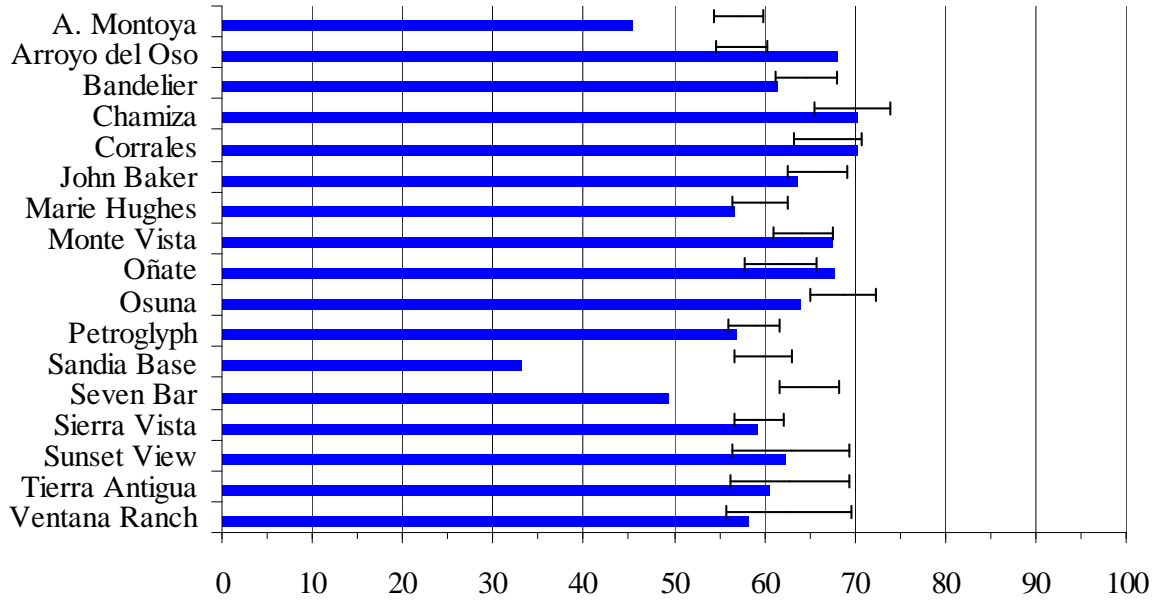


*Solid horizontal bars show schools' percent proficient achieved.
Hairlines show predicted proficiency range (95% confidence interval)*

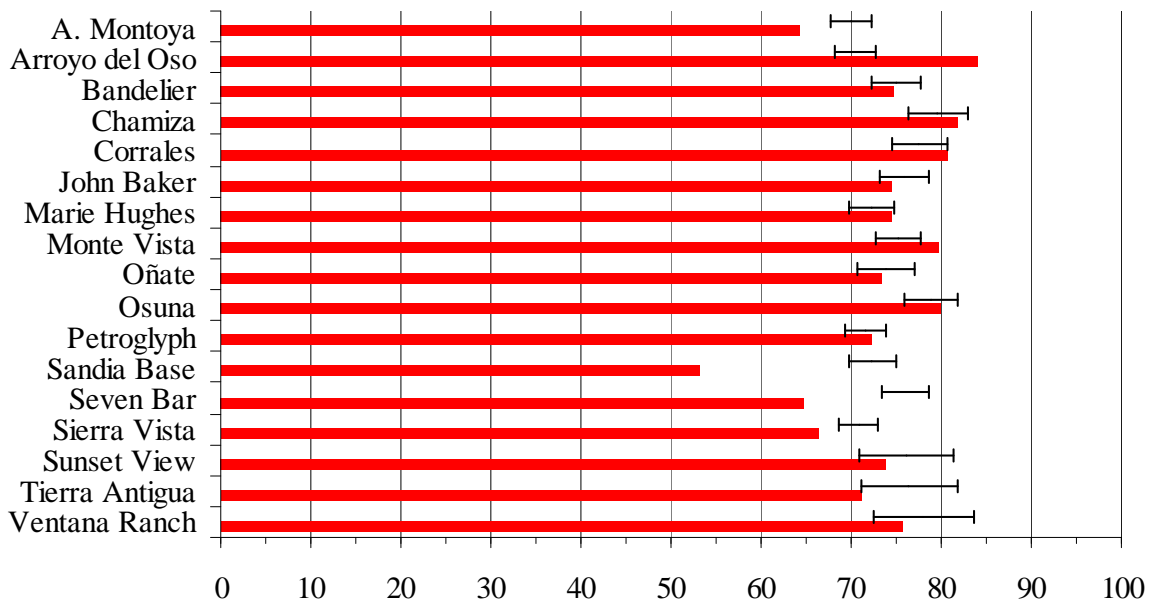
Comparison of Achieved Percent Proficient with Predicted Achievement Range

Statistical Peers Group 7 NM Standards Based Assessment 2009

Math Percent Proficient 2009



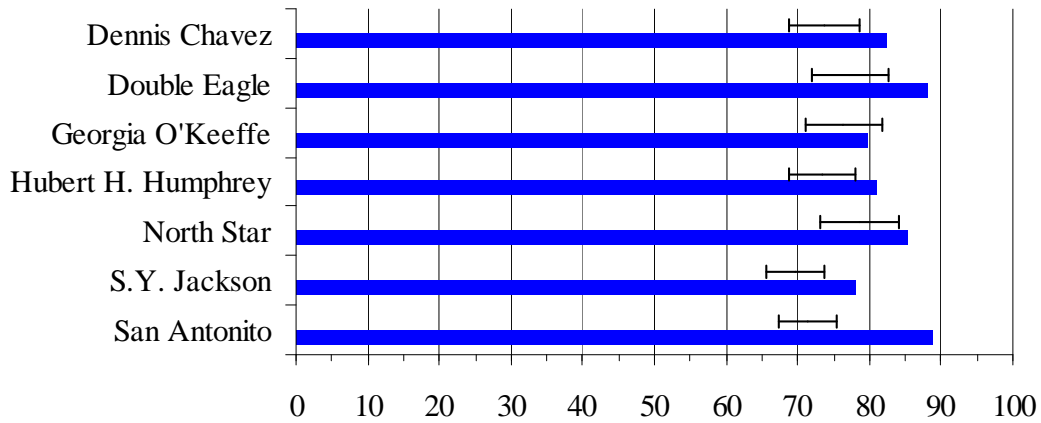
Reading Percent Proficient 2009



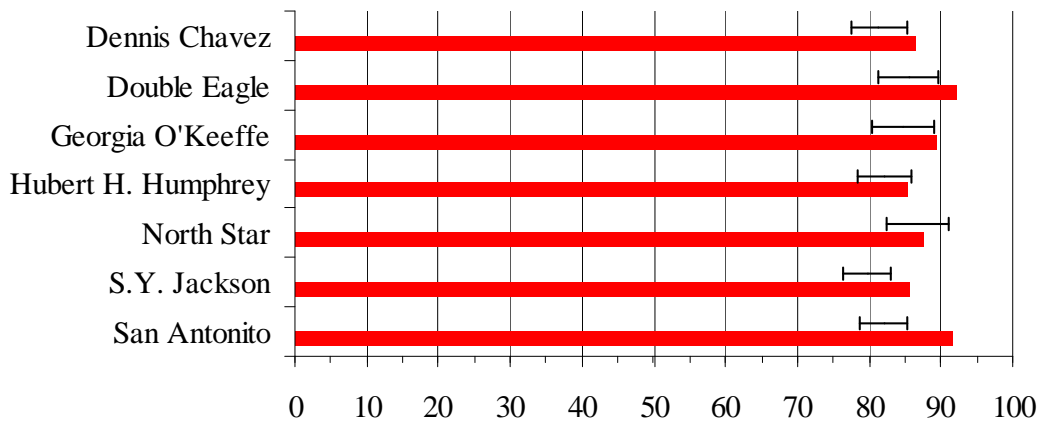
*Solid horizontal bars show schools' percent proficient achieved.
Hairlines show predicted proficiency range (95% confidence interval)*

**Comparison of Achieved Percent Proficient with
Predicted Achievement Range
Statistical Peers Group 8 NM Standards Based Assessment 2009**

Math Percent Proficient 2009



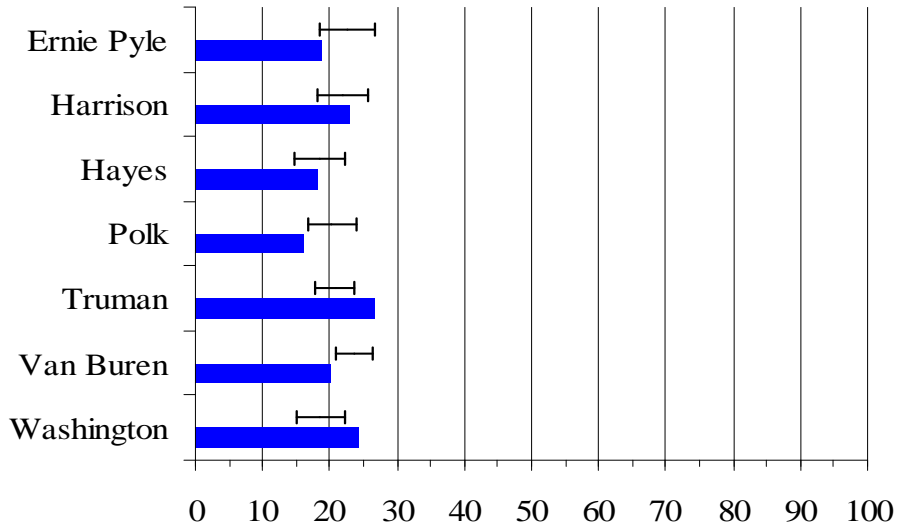
Reading Percent Proficient 2009



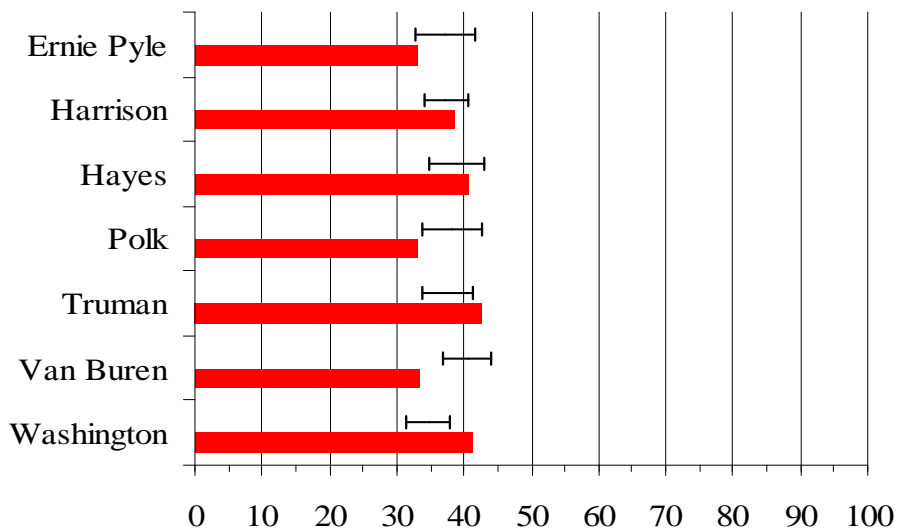
*Solid horizontal bars show schools' percent proficient achieved.
Hairlines show predicted proficiency range (95% confidence interval)*

**Comparison of Achieved Percent Proficient with
Predicted Achievement Range
Statistical Peers Group 9 NM Standards Based Assessment 2009**

Math Percent Proficient 2009



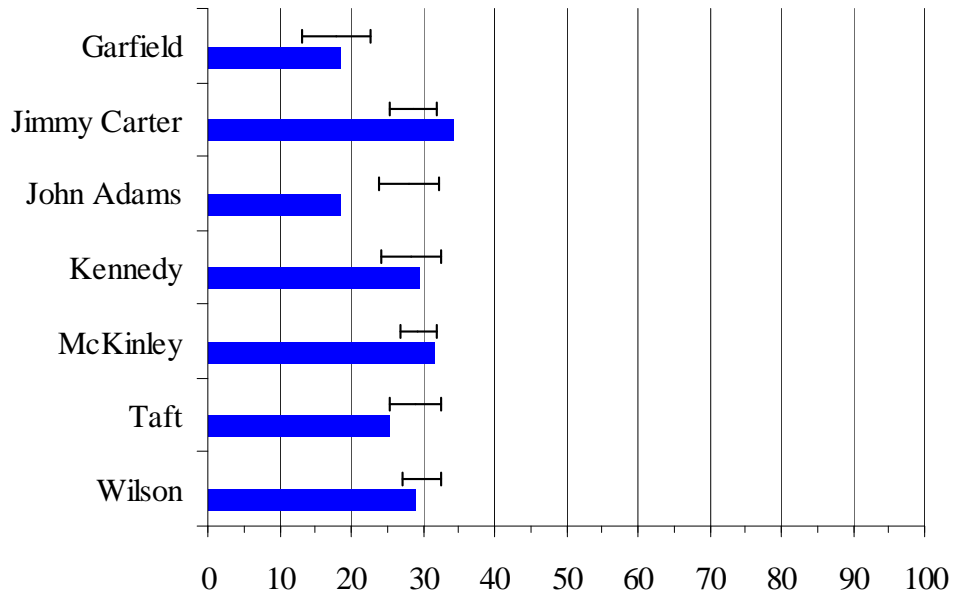
Reading Percent Proficient 2009



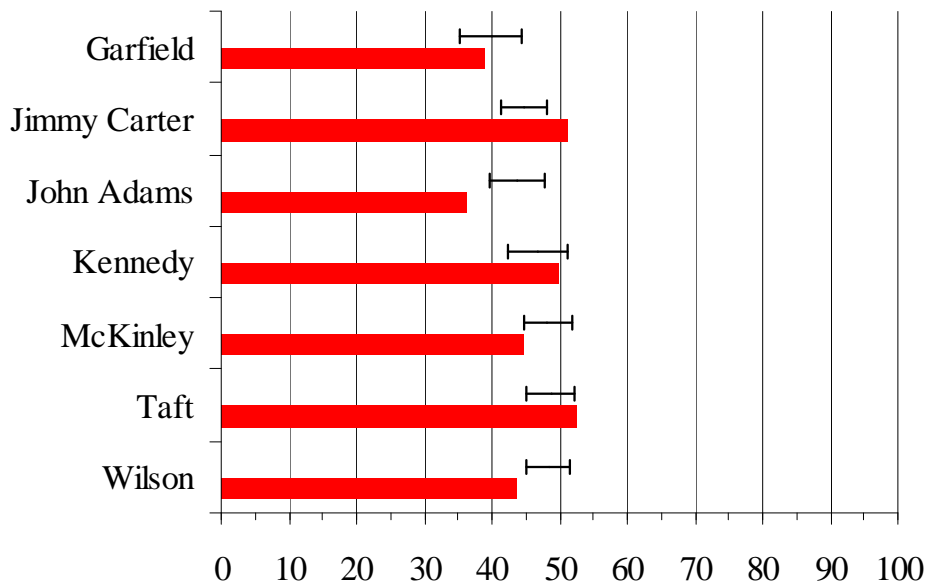
*Solid horizontal bars show schools' percent proficient achieved.
Hairlines show predicted proficiency range (95% confidence interval)*

**Comparison of Achieved Percent Proficient with
Predicted Achievement Range
Statistical Peers Group 10 NM Standards Based Assessment 2009**

Math Percent Proficient 2009



Reading Percent Proficient 2009

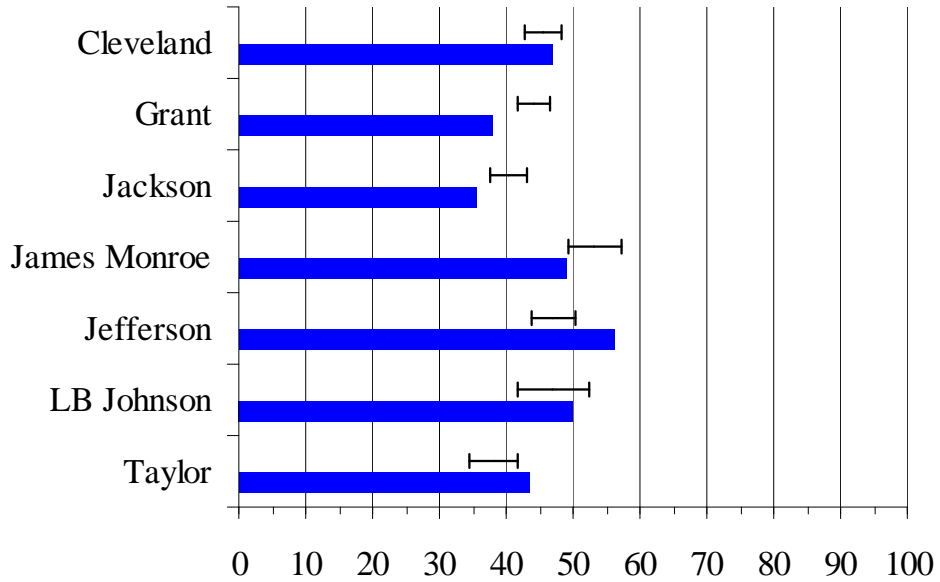


*Solid horizontal bars show schools' percent proficient achieved.
Hairlines show predicted proficiency range (95% confidence interval)*

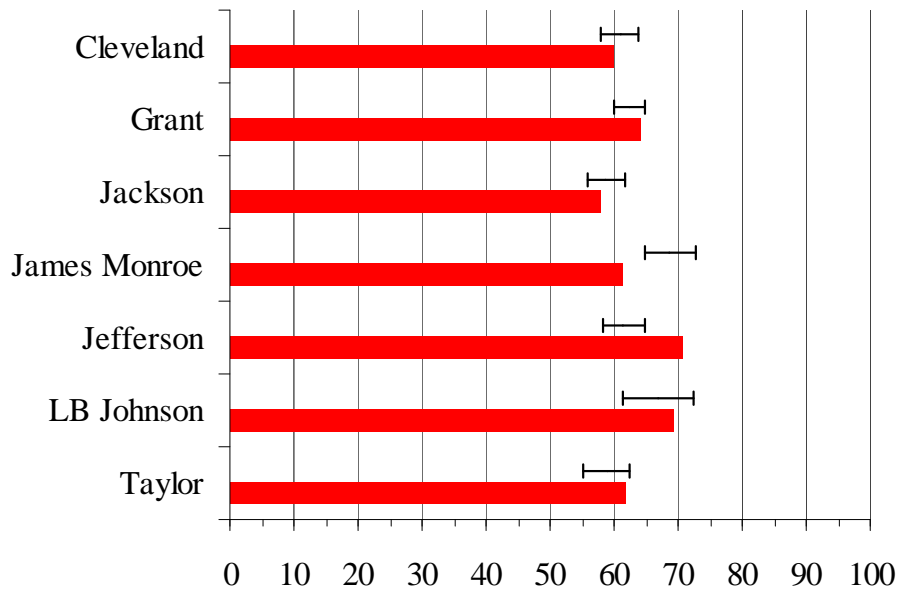
Comparison of Achieved Percent Proficient with Predicted Achievement Range

Statistical Peers Group 11 NM Standards Based Assessment 2009

Math Percent Proficient 2009



Reading Percent Proficient 2009

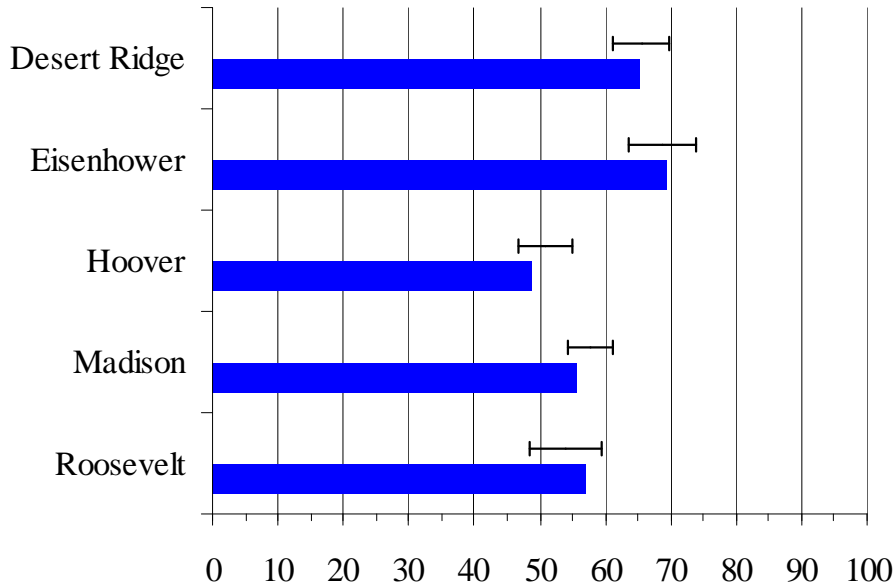


*Solid horizontal bars show schools' percent proficient achieved.
Hairlines show predicted proficiency range (95% confidence interval)*

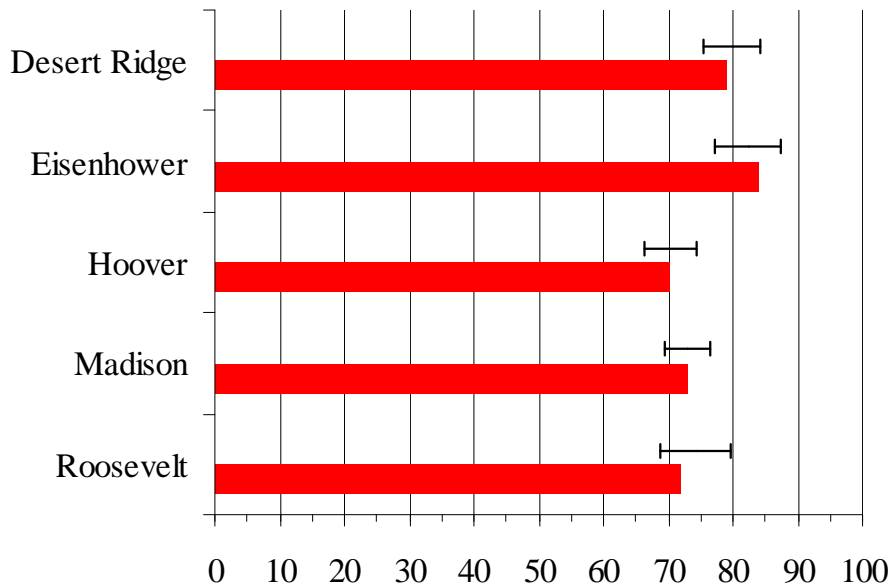
Comparison of Achieved Percent Proficient with Predicted Achievement Range

Statistical Peers Group 12 NM Standards Based Assessment 2009

Math Percent Proficient 2009



Reading Percent Proficient 2009

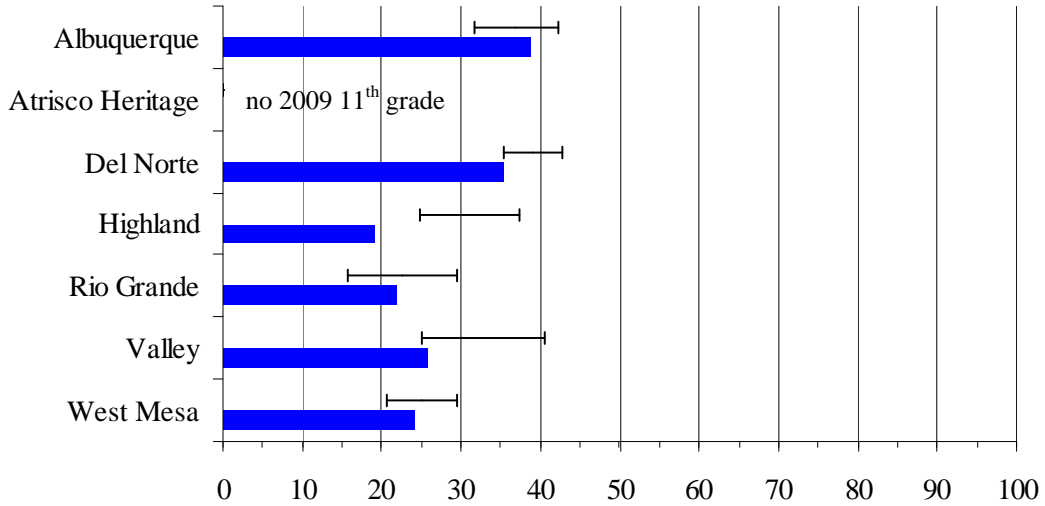


*Solid horizontal bars show schools' percent proficient achieved.
Hairlines show predicted proficiency range (95% confidence interval)*

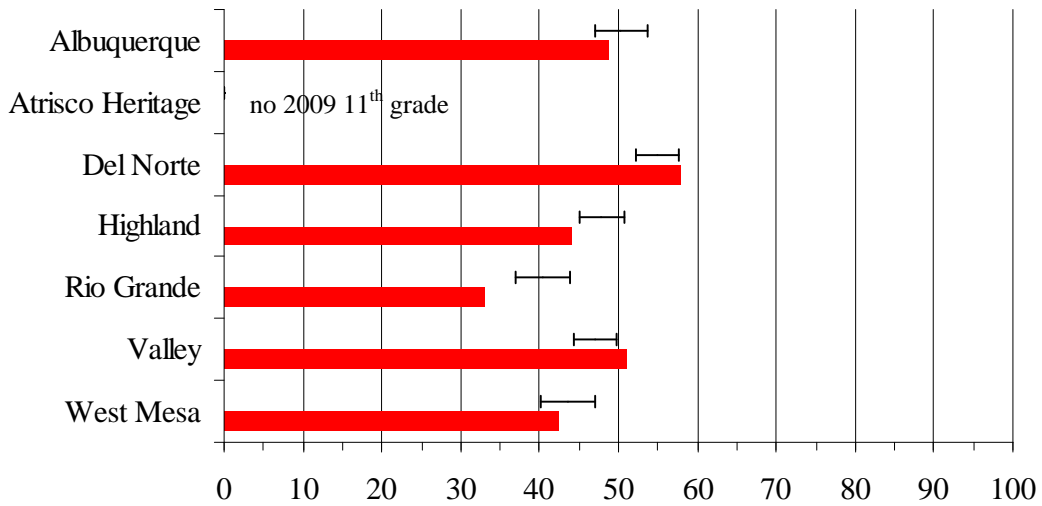
Comparison of Achieved Percent Proficient with Predicted Achievement Range

Statistical Peers Group 13 NM Standards Based Assessment 2009

Math Percent Proficient 2009



Reading Percent Proficient 2009

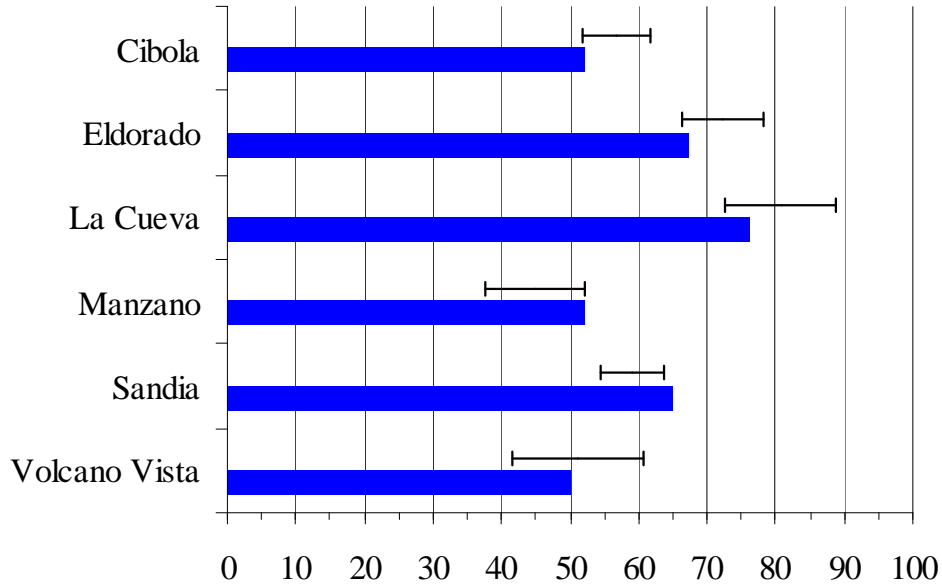


*Solid horizontal bars show schools' percent proficient achieved.
Hairlines show predicted proficiency range (95% confidence interval)*

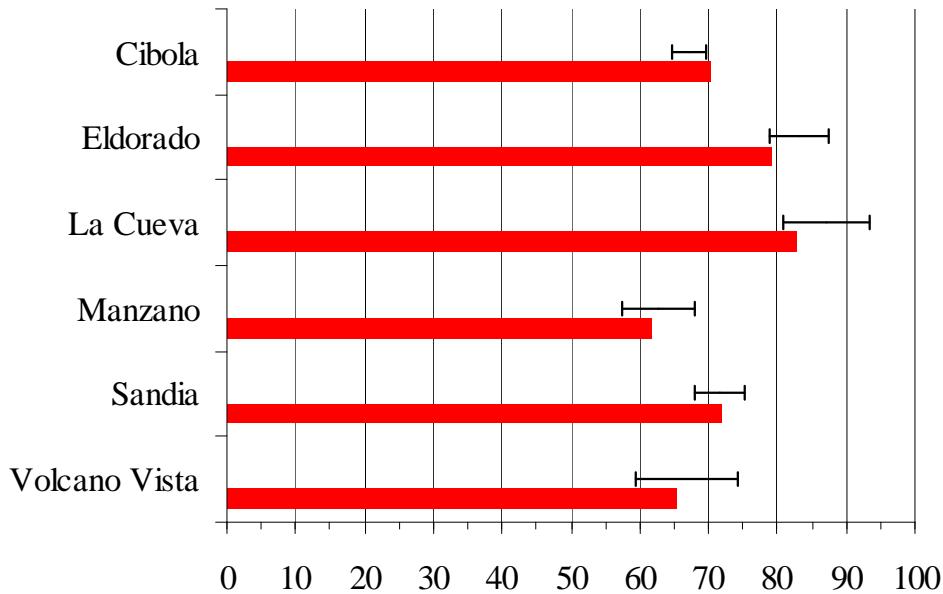
Comparison of Achieved Percent Proficient with Predicted Achievement Range

Statistical Peers Group 14 NM Standards Based Assessment 2009

Math Percent Proficient 2009



Reading Percent Proficient 2009



*Solid horizontal bars show schools' percent proficient achieved.
Hairlines show predicted proficiency range (95% confidence interval)*

Student Demographics by School 2008 - 2009

Table 1. Demographic data considered in forming Statistical Peers 2008-2009

Stat-Peers 2009	School	FRL ¹ percent	ELL ² percent	non-Anglo ³ percent	Special Education ⁴ percent	Mobility ⁵ percent
1	East San Jose	97.4	59.9	95.0	9.1	0.2
	Emerson	97.4	54.3	92.0	6.6	0.6
	La Mesa	99.1	66.7	96.5	7.4	0.5
	Mountain View	90.2	61.0	89.5	8.9	0.9
	Wherry	84.8	56.8	90.6	13.6	0.6
2	Adobe Acres	87.3	48.1	94.2	8.0	0.4
	Alamosa	93.1	40.1	95.7	8.5	0.3
	Armijo	96.2	48.1	96.1	8.7	0.5
	Barcelona	95.8	41.7	95.3	8.3	0.1
	Dolores Gonzales	98.7	43.7	96.1	8.4	0.4
	Duranes	89.8	37.7	95.7	18.4	0.5
	Eugene Field	93.2	48.5	98.4	7.2	0.6
	Hawthorne	87.7	43.9	88.9	13.6	0.4
	Kit Carson	91.0	34.5	96.4	11.4	0.4
	La Luz	81.7	42.5	97.0	9.9	0.3
	Lavaland	92.2	45.8	95.8	4.7	0.6
	Los Padillas	92.9	38.3	94.2	16.2	0.5
	Lowell	94.0	42.8	95.3	11.3	0.1
	Navajo	92.8	40.0	89.0	13.1	0.4
	Valle Vista	95.6	42.5	95.5	14.7	0.3
3	Atrisco	86.5	31.0	92.7	15.8	0.3
	Cochiti	80.6	22.0	88.2	10.6	0.4
	Edward Gonzales	77.2	39.4	92.8	9.4	0.2
	Eubank	80.1	22.6	73.1	12.1	0.5
	Kirtland	84.3	33.2	84.9	10.8	0.5
	Mary Ann Binford	76.3	34.3	94.5	13.3	0.7
	Reginald Chavez	84.9	26.3	94.9	10.2	0.3
	Tomasita	78.5	25.7	81.6	9.9	0.5
	Whittier	89.5	30.4	89.4	8.2	0.7
4	Alameda	62.3	24.9	85.5	8.8	0.3
	Carlos Rey	65.8	39.0	93.0	6.8	0.2
	Lew Wallace	52.4	21.1	84.5	7.4	0.2
	Longfellow	57.6	34.8	91.9	8.1	0.2
	Los Ranchos	56.1	24.7	87.5	16.2	0.4
	Montezuma	51.4	27.1	68.0	17.9	0.5
	Painted Sky	58.6	29.5	87.4	7.0	0.2
	Pajarito	64.7	28.5	88.2	12.1	0.4
	Susie Rayos Marmon	62.8	23.6	84.2	13.9	0.6

¹ FRL: student eligibility for free or reduced priced lunch, a proxy measure for economic challenge

² ELL: English language learners

³ non-Anglo: cultural/ethnic Hispanic/Latino, Native American, African American, Asian American

⁴ Special Education: eligible students excluding Gifted Education

⁵ Mobility: number of students who either enrolled or withdrew divided by total school enrollment

Student Demographics by School 2008 - 2009

Stat-Peers 2009	School	FRL ¹ percent	ELL ² percent	non-Anglo ³ percent	Special Education ⁴ percent	Mobility ⁵ percent
5	Bel-Air	69.4	19.2	78.9	15.0	0.4
	Hodgin	64.9	14.5	80.3	15.4	0.3
	MacArthur	68.6	13.3	87.3	24.2	0.4
	Mark Twain	61.3	17.8	70.4	24.7	0.5
	McCollum	57.3	10.1	63.6	26.6	0.6
	Mission Avenue	61.6	16.8	80.2	16.1	0.4
6	Acoma	49.5	2.8	52.7	15.0	0.2
	Alvarado	49.9	11.4	70.3	11.6	0.3
	Apache	45.1	9.0	63.8	15.9	0.7
	Bellehaven	43.4	8.1	61.3	12.3	0.2
	Chaparral	43.6	15.6	76.0	16.9	0.5
	Chelwood	55.8	3.7	57.3	12.0	0.6
	Collet Park	49.6	6.8	47.6	20.3	0.5
	Comanche	38.9	7.0	49.8	12.5	0.4
	Edmund G. Ross	54.9	11.1	68.3	11.7	0.4
	Governor Bent	54.3	9.8	69.6	10.6	0.4
	Griegos	49.4	5.8	81.4	9.6	0.3
	Inez	46.1	9.5	57.7	16.8	0.1
	Manzano Mesa	51.4	19.3	70.5	11.5	0.4
	Matheson Park	53.6	9.2	61.1	7.2	0.4
	Mitchell	41.6	8.9	49.5	13.6	0.3
	Sombra del Monte	45.0	9.6	50.1	12.6	0.6
Zia	48.6	16.5	68.4	21.5	0.4	
Zuni	44.0	6.1	63.2	8.1	0.3	
7	A. Montoya	36.5	4.9	48.2	14.0	0.4
	Arroyo del Oso	34.9	5.5	55.2	13.5	0.4
	Bandelier	29.4	7.4	47.5	9.9	0.2
	Chamiza	19.2	2.4	51.9	11.8	0.2
	Corrales	23.0	2.0	41.2	12.7	0.2
	John Baker	23.8	7.3	35.5	11.7	0.3
	Marie Hughes	34.8	5.2	64.8	10.5	0.3
	Monte Vista	27.2	7.1	48.7	10.1	0.3
	Oñate	25.1	1.4	42.4	17.4	0.4
	Osuna	18.9	4.1	41.2	11.5	0.3
	Petroglyph	32.4	4.3	57.8	13.9	0.4
	Sandia Base	35.0	6.3	50.1	9.6	0.3
	Seven Bar	23.0	5.3	53.9	12.7	0.4
	Sierra Vista	35.7	7.3	59.3	12.3	0.3
	Sunset View	20.4	7.8	57.0	9.4	0.8
	Tierra Antigua	21.0	7.6	53.4	8.4	0.8
Ventana Ranch	20.2	3.5	49.3	7.0	0.8	

¹ FRL: student eligibility for free or reduced priced lunch, a proxy measure for economic challenge

² ELL: English language learners

³ non-Anglo: cultural/ethnic Hispanic/Latino, Native American, African American, Asian American

⁴ Special Education: eligible students excluding Gifted Education

⁵ Mobilty: number of students who either enrolled or withdrew divided by total school enrollment

Student Demographics by School 2008 - 2009

Stat-Peers 2009	School	FRL ¹ percent	ELL ² percent	non-Anglo ³ percent	Special Education ⁴ percent	Mobility ⁵ percent
8	Dennis Chavez	11.9	5.1	38.2	13.3	0.2
	Double Eagle	3.8	2.1	20.2	12.5	0.2
	Georgia O'Keeffe	9.8	6.3	31.1	6.9	0.2
	Hubert H. Humphrey	11.3	6.2	35.9	10.5	0.3
	North Star	4.2	1.7	31.9	10.3	0.1
	S.Y. Jackson	16.3	1.3	26.0	14.0	0.2
	San Antonito	14.2	1.3	19.4	10.1	0.3
9	Ernie Pyle	89.7	32.2	95.3	12.4	1.4
	Harrison	90.3	29.5	93.1	13.5	1.7
	Hayes	86.8	40.1	87.5	18.3	1.4
	Polk	89.4	22.8	88.5	16.3	1.7
	Truman	88.1	24.7	93.9	14.4	1.0
	Van Buren	84.0	39.7	88.3	14.6	1.4
	Washington	94.2	35.6	97.5	14.0	1.3
10	Garfield	80.3	20.2	91.5	18.4	1.5
	Jimmy Carter	72.7	20.1	89.2	12.1	1.3
	John Adams	72.8	21.9	92.9	11.2	1.4
	Kennedy	76.6	14.0	72.1	17.3	0.8
	McKinley	67.2	14.0	79.9	15.3	1.2
	Taft	64.0	8.2	82.5	15.1	0.9
	Wilson	66.1	25.2	81.2	14.6	1.3
11	Cleveland	48.6	4.9	59.5	12.1	1.1
	Grant	44.8	3.8	56.8	14.6	1.0
	Jackson	52.8	5.5	59.5	15.6	1.0
	James Monroe	29.6	3.5	56.5	9.7	1.3
	Jefferson	44.7	5.8	63.8	10.1	0.6
	LB Johnson	29.5	2.0	60.5	13.2	0.9
	Taylor	47.8	7.0	64.7	16.1	1.3
12	Desert Ridge	13.2	2.1	36.6	9.1	0.7
	Eisenhower	11.5	1.6	29.5	9.2	0.8
	Hoover	32.8	1.9	41.6	16.0	1.0
	Madison	25.7	3.9	44.5	10.8	0.8
	Roosevelt	27.8	0.5	32.5	17.2	0.9

¹ FRL: student eligibility for free or reduced priced lunch, a proxy measure for economic challenge

² ELL: English language learners

³ non-Anglo: cultural/ethnic Hispanic/Latino, Native American, African American, Asian American

⁴ Special Education: eligible students excluding Gifted Education

⁵ Mobilty: number of students who either enrolled or withdrew divided by total school enrollment

Student Demographics by School 2008 - 2009

Stat-Peers 2009	School	FRL ¹ percent	ELL ² percent	non-Anglo ³ percent	Special Education ⁴ percent	Mobility ⁵ percent
13	Albuquerque	44.0	14.7	82.9	12.3	1.1
	Atrisco Heritage Academy	85.9	20.1	91.6	12.7	-
	Del Norte	40.8	10.2	69.9	15.2	1.0
	Highland	54.9	21.7	81.8	15.3	0.9
	Rio Grande	62.7	25.1	93.2	16.1	0.9
	Valley	38.7	6.9	83.9	15.0	1.0
	West Mesa	62.0	18.4	91.9	13.8	1.2
14	Cibola	18.4	1.7	53.6	12.5	0.7
	Eldorado	14.3	1.5	29.9	10.4	0.6
	La Cueva	7.0	0.6	31.1	5.8	0.6
	Manzano	35.9	5.5	53.3	17.1	0.8
	Sandia	21.4	2.2	44.2	13.4	0.5
	Volcano Vista	18.9	1.7	60.1	11.3	6.3

¹ FRL: student eligibility for free or reduced priced lunch, a proxy measure for economic challenge

² ELL: English language learners

³ non-Anglo: cultural/ethnic Hispanic/Latino, Native American, African American, Asian American

⁴ Special Education: eligible students excluding Gifted Education

⁵ Mobilty: number of students who either enrolled or withdrew divided by total school enrollment

Table 2. NMSBA performance and predicted proficiency range (95% confidence interval) – 2009

		Math			Reading		
Stat-Peers 2009	School	Percent Proficient ¹	Predicted Range Lower end ²	Predicted Range Upper end ²	Percent Proficient ¹	Predicted Range Lower end ²	Predicted Range Upper end ²
1	East San Jose	37.0	33.9	46.1	44.8	33.4	43.3
	Emerson	26.6	28.5	38.9	25.3	34.1	42.5
	La Mesa	48.4	31.4	44.4	49.6	30.8	41.4
	Mountain View	48.4	27.4	43.5	48.4	31.4	44.5
	Wherry	24.1	33.8	47.0	29.1	35.2	45.9
2	Adobe Acres	47.5	36.2	44.1	42.7	40.7	47.1
	Alamosa	33.6	32.1	39.9	36.1	39.9	46.2
	Armijo	38.9	30.3	38.1	44.3	36.5	42.8
	Barcelona	39.9	32.3	43.2	45.2	38.4	47.2
	Dolores Gonzales	58.4	28.9	37.1	53.7	36.6	43.2
	Duranes	39.7	27.4	36.8	34.7	35.9	43.5
	Eugene Field	51.4	30.3	39.4	56.9	37.2	44.6
	Hawthorne	30.3	34.4	41.9	42.2	39.3	45.4
	Kit Carson	30.0	30.8	38.0	42.0	40.5	46.3
	La Luz	42.2	39.3	46.3	37.2	44.1	49.7
	Lavaland	28.2	29.5	40.3	45.6	38.2	47.0
	Los Padillas	29.4	27.9	35.9	33.0	36.3	42.8
	Lowell	23.6	33.3	44.8	28.2	37.7	47.1
	Navajo	42.3	30.4	37.1	50.4	38.1	43.5
Valle Vista	41.5	29.5	37.7	44.7	35.7	42.3	
3	Atrisco	42.6	32.2	40.6	47.2	41.1	47.9
	Cochiti	23.4	32.7	41.6	53.9	46.4	53.6
	Edward Gonzales	44.9	42.5	51.2	42.6	46.8	53.9
	Eubank	36.8	30.9	39.5	50.8	45.3	52.2
	Kirtland	36.5	33.8	40.0	40.9	43.7	48.8
	Mary AnnBinford	42.9	33.6	42.2	53.0	43.7	50.6
	Reginald Chavez	48.0	32.9	42.0	52.1	44.5	51.9
	Tomasita	33.3	33.4	41.5	49.3	46.6	53.1
Whittier	27.8	24.6	36.6	41.3	39.5	49.2	

¹Proficient and Advanced of Total Students group identified FAY (full academic year) by NM Public Education Department

²Significant predictors from percents of FRL, ELL, Special Education, Mobility were used in the OLS regression that produced the 95% confidence intervals of predicted performance.

Stat-Peers 2009	School	Math			Reading		
		Percent Proficient ¹	Predicted Range Lower end ²	Predicted Range Upper end ²	Percent Proficient ¹	Predicted Range Lower end ²	Predicted Range Upper end ²
4	Alameda	48.1	47.5	53.7	63.2	56.2	61.2
	Carlos Rey	44.6	48.6	57.9	46.9	52.2	59.8
	Lew Wallace	51.1	52.2	59.1	65.0	61.3	66.9
	Longfellow	44.6	51.8	60.4	57.1	55.9	62.9
	Los Ranchos	41.3	47.1	54.0	44.8	54.8	60.4
	Montezuma	41.1	46.7	56.8	53.0	53.8	62.0
	Painted Sky	54.0	50.6	58.0	57.7	57.3	63.3
	Pajarito	30.5	44.7	49.2	39.8	53.0	56.7
S.R. Marmon	35.1	39.9	47.1	46.6	51.6	57.5	
5	Bel-Air	36.2	38.0	44.4	56.6	50.6	55.7
	Hodgin	35.3	40.8	48.7	60.9	53.3	59.7
	MacArthur	59.2	31.1	44.0	68.9	45.2	55.7
	Mark Twain	31.1	35.4	48.6	50.0	47.0	57.7
	McCollum	35.8	33.4	48.4	56.6	48.1	60.2
	Mission Avenue	53.2	42.4	48.4	46.8	54.1	59.1
6	Acoma	37.6	46.8	56.1	56.4	61.5	69.1
	Alvarado	53.3	50.0	55.7	62.9	62.3	67.0
	Apache	51.1	43.7	53.3	67.2	59.3	67.2
	Bellehaven	62.5	53.1	59.3	71.9	65.4	70.4
	Chaparral	48.9	49.9	57.2	66.2	60.5	66.4
	Chelwood	38.2	38.6	49.5	51.3	57.6	66.4
	Collet Park	53.5	42.2	51.7	53.3	57.0	64.7
	Comanche	56.9	53.5	58.9	72.4	66.8	71.2
	Edmond G. Ross	47.8	45.3	51.8	65.1	59.4	64.7
	Governor Bent	57.1	44.8	52.3	69.8	59.8	65.9
	Griegos	70.7	48.2	57.2	79.6	63.1	70.4
	Inez	53.1	51.1	60.9	64.3	61.4	69.4
	Manzano Mesa	55.3	50.7	54.9	65.0	60.7	64.1
	Matheson Park	54.8	45.3	55.2	62.6	60.9	68.9
	Mitchell	52.5	53.7	59.1	57.6	65.5	69.8
	Sombra del Monte	45.4	47.4	54.7	61.1	62.1	68.1
Zia	61.3	45.3	56.0	67.1	55.3	63.9	
Zuni	58.7	51.2	59.8	72.5	65.9	72.8	

¹Proficient and Advanced of Total Students group identified FAY (full academic year) by NM Public Education Department

²Significant predictors from percents of FRL, ELL, Special Education, Mobility were used in the OLS regression that produced the 95% confidence intervals of predicted performance.

Stat-Peers 2009	School	Math			Reading		
		Percent Proficient ¹	Predicted Range Lower end ²	Predicted Range Upper end ²	Percent Proficient ¹	Predicted Range Lower end ²	Predicted Range Upper end ²
7	A. Montoya	45.4	54.3	59.9	64.4	67.6	72.2
	Arroyo del Oso	68.1	54.7	60.4	84.0	68.1	72.7
	Bandelier	61.5	61.3	68.1	74.7	72.2	77.7
	Chamiza	70.2	65.6	73.9	81.9	76.3	82.9
	Corrales	70.2	63.2	70.8	80.7	74.5	80.6
	John Baker	63.8	62.5	69.2	74.6	73.3	78.7
	Marie Hughes	56.6	56.5	62.7	74.6	69.7	74.8
	Monte Vista	67.6	61.1	67.5	79.7	72.7	77.8
	Oñate	67.7	57.9	65.7	73.5	70.7	77.0
	Osuna	64.0	65.1	72.4	80.1	76.0	81.9
	Petroglyph	57.0	56.0	61.8	72.3	69.3	74.0
	Sandia Base	33.0	56.7	63.1	53.2	69.7	74.9
	Seven Bar	49.4	61.7	68.3	64.8	73.3	78.7
	Sierra Vista	59.1	56.7	62.1	66.4	68.7	73.0
	Sunset View	62.3	56.5	69.4	73.8	70.9	81.4
Tierra Antigua	60.5	56.2	69.4	71.1	71.0	81.7	
Ventana Ranch	58.2	55.7	69.6	75.7	72.4	83.6	
8	Dennis Chavez	82.3	68.7	78.6	86.5	77.4	85.4
	Double Eagle	88.1	72.0	82.6	92.2	81.2	89.8
	Georgia O'Keeffe	79.7	71.1	81.8	89.2	80.3	89.0
	H.H. Humphrey	80.8	68.8	78.0	85.2	78.3	85.8
	North Star	85.3	73.2	84.1	87.5	82.3	91.1
	S.Y. Jackson	78.0	65.6	73.6	85.5	76.4	83.0
	San Antonito	88.6	67.3	75.4	91.6	78.8	85.3
9	Ernie Pyle	19.0	18.5	26.6	33.1	33.1	41.3
	Harrison	23.0	18.2	25.6	38.6	33.5	41.1
	Hayes	18.2	14.9	22.3	40.6	35.1	42.7
	Polk	16.0	16.9	23.8	33.1	34.8	41.7
	Truman	26.7	17.8	23.7	42.8	34.6	40.7
	Van Buren	20.3	20.8	26.5	33.3	37.6	43.4
	Washington	24.4	15.0	22.3	41.2	31.0	38.4

¹Proficient and Advanced of Total Students group identified FAY (full academic year) by NM Public Education Department

²Significant predictors from percents of FRL, ELL, Special Education, Mobility were used in the OLS regression that produced the 95% confidence intervals of predicted performance.

Stat-Peers 2009	School	Math			Reading		
		Percent Proficient ¹	Predicted Range Lower end ²	Predicted Range Upper end ²	Percent Proficient ¹	Predicted Range Lower end ²	Predicted Range Upper end ²
10	Garfield	18.5	13.2	22.7	38.9	35.2	44.8
	Jimmy Carter	34.3	25.3	31.8	51.2	41.3	47.9
	John Adams	18.5	23.9	32.1	36.4	39.6	47.9
	Kennedy	29.5	24.0	32.6	49.8	42.5	51.2
	McKinley	31.6	26.8	31.9	44.6	45.8	50.8
	Taft	25.3	25.4	32.6	52.5	44.9	52.4
	Wilson	29.1	27.2	32.5	43.8	45.8	51.2
11	Cleveland	46.9	42.7	48.3	60.0	58.1	63.8
	Grant	37.9	41.7	46.6	64.0	59.9	64.9
	Jackson	35.5	37.4	43.1	57.8	55.9	61.6
	James Monroe	49.1	49.3	57.2	61.3	64.7	72.7
	Jefferson	56.3	43.7	50.2	70.8	58.2	64.8
	LB Johnson	50.0	41.6	52.5	69.3	61.2	72.3
	Taylor	43.4	34.5	41.9	61.8	55.1	62.6
12	Desert Ridge	65.4	61.1	69.9	78.9	75.3	84.3
	Eisenhower	69.4	63.7	73.8	83.7	77.2	87.5
	Hoover	48.8	46.8	54.9	70.3	66.2	74.4
	Madison	55.6	54.3	61.1	73.1	69.6	76.5
	Roosevelt	57.0	48.6	59.5	71.8	68.7	79.8
13	Albuquerque	38.7	31.6	42.2	48.8	47.0	53.7
	Atrisco Heritage	no data	no data	no data	no data	no data	no data
	Del Norte	35.3	35.5	42.7	58.0	52.3	57.7
	Highland	19.1	24.8	37.3	44.2	45.1	50.6
	Rio Grande	21.9	15.8	29.4	33.0	36.9	43.9
	Valley	25.9	25.1	40.6	51.1	44.3	49.8
	West Mesa	24.0	20.5	29.5	42.3	40.1	47.0
14	Cibola	52.0	51.8	61.7	70.4	64.7	69.8
	Eldorado	67.2	66.3	78.2	79.1	78.9	87.3
	La Cueva	76.2	72.7	88.9	83.0	81.0	93.3
	Manzano	52.3	37.7	52.3	61.8	57.5	67.9
	Sandia	64.9	54.4	63.8	71.8	68.1	75.2
	Volcano Vista	50.0	41.6	60.6	65.2	59.5	74.1

¹Proficient and Advanced of Total Students group identified FAY (full academic year) by NM Public Education Department

²Significant predictors from percents of FRL, ELL, Special Education, Mobility were used in the OLS regression that produced the 95% confidence intervals of predicted performance.